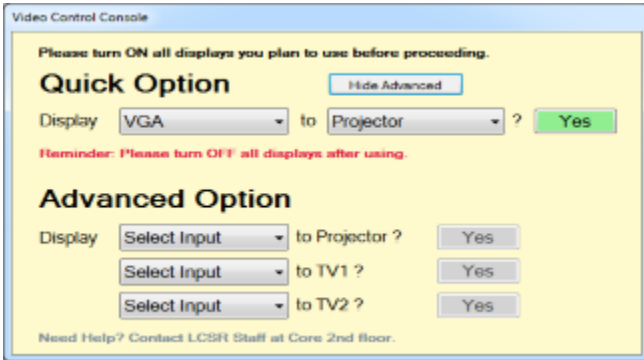
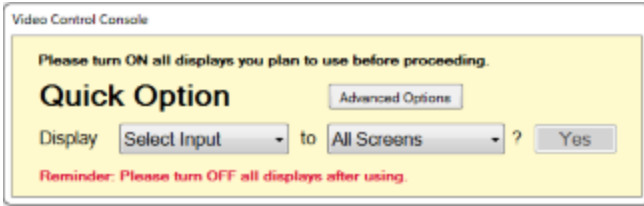


A Guide to the Video Control Console



Options Available:

1) Quick Option: Allows the display of content from one video source to one or more displays.

2) Advanced Option: Allows the display of content from multiple video sources to one or more displays at the same time.

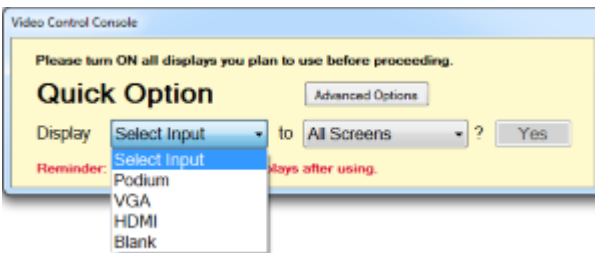
(If no Advanced Options are displayed, the please click the “Advanced Options” button)

How To Use (Quick Option)

This Conference Room supports Apple AirPlay.

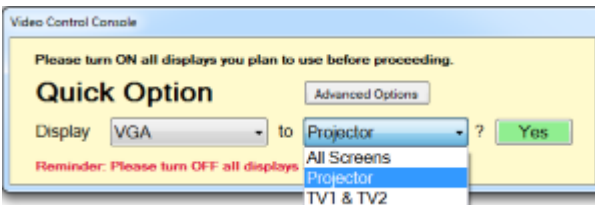
To mirror your display to the Podium PC with AirPlay, please connect to Wireless network “CS-Research”

Step 1: Please have the content you wish to display ready. If you plan to use the HDMI or VGA cables, please have the cables plugged into your machine.

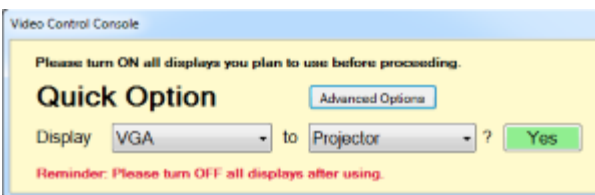


Step 2: Select an input by clicking the dropdown to the right of “Display”. (Choose to display from Podium, HDMI, VGA, or Blank)

***Selecting blank is the same as displaying a blank screen.**



Step 3: Choose an output display. (Projector or TV1 & TV2)



Step 4: When you are finished with your choice, please hit the “Yes” button. **Do not skip this step!**

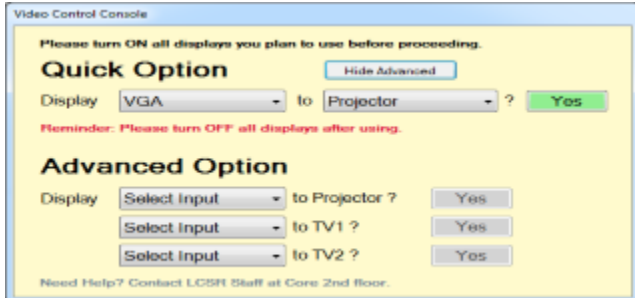
(In this example, the projector will display whatever is connected to the VGA cable)

How To Use: (Advanced Options)

This Conference Room supports Apple AirPlay.

To mirror your display to the Podium PC with AirPlay, please connect to Wireless network "CS-Research"

Step 1: Please have the content you wish to display ready. If you plan to use the HDMI or VGA cables, please have the cables plugged into your machine.



Video Control Console

Please turn ON all displays you plan to use before proceeding.

Quick Option Hide Advanced

Display **VGA** to **Projector** ?

Reminder: Please turn OFF all displays after using.

Advanced Option

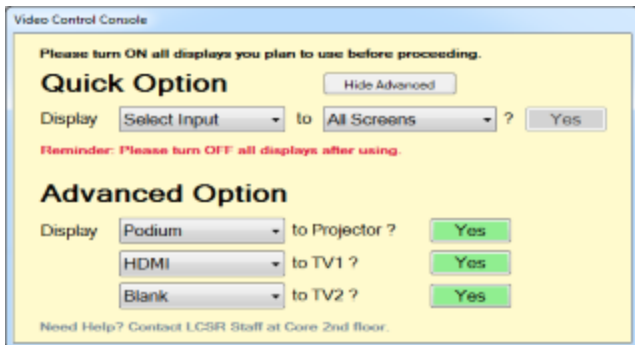
Display **Select Input** to Projector ?

Select Input to TV1 ?

Select Input to TV2 ?

Need Help? Contact LCSR Staff at Core 2nd floor.

Step 2: For each output you wish to use (Projector, TV1, TV2), please select the input you wish to display from (See Step 2 in How To Use: Quick Options)



Video Control Console

Please turn ON all displays you plan to use before proceeding.

Quick Option Hide Advanced

Display **Select Input** to **All Screens** ?

Reminder: Please turn OFF all displays after using.

Advanced Option

Display **Podium** to Projector ?

HDMI to TV1 ?

Blank to TV2 ?

Need Help? Contact LCSR Staff at Core 2nd floor.

Step 3: When you are finished with your choices, click the "Yes button" for each of the output choices you wish to display. **Do not skip this step!**

*The result of this example will display the Podium on the projector, the HDMI source to TV1, and a Blank Screen on TV2.

Questions or Concerns?

Please contact the Operator by calling 848-445-2443 or ask them in person by visiting Core 235 (located on the 2nd floor of the Core building)

If no operator is present, then please contact Hanz Makmur at 848-445-8298 or visit Core 211 (located on 2nd floor of the Core building)

Conference Rooms Info:

CoRE A

Location: **Core 301**

Skype Username: cs-core301

Ceiling Phone: 1-732-993-8033 (Free call to US/Canada)

Room Phone: 1-848-445-8301*

Core B

Location: **Core 305**

Username: cs-core305

Room Phone: 1-848-445-8305*

Hill 4

Location: **Hill 484**

Skype Username: cs-hill484

Room Phone: 1-848-445-7454*

Core2

Location: **Core 227**

Skype Username: lcsr-core237

Room Phone: 1-848-445-8393*

Skype Password: -available in the room-

*Room Phone requires pin# to call out.

For Pin#, contact Ingrid at 5-7056 • CoRE 213